

DENTAL  
MENTOR



MEDIC  
MENTOR



VET  
MENTOR



YOUR MEDIC FAMILY

# AWARDS PROGRAMME

## MARK SCHEME





# Contents

		Page No.
	Essential Requirements	3
<b>Quality Descriptors</b>	Minimum Acceptance Criteria	4
<b>Criterion</b>	Application Knowledge	5
	E-Learning	6
	School Societies / Virtual Medical Society	7
	Commitment to Extra-curricular Activities	8
	Develop Skills Relevant to Medicine	9
	Presentation Skills	10
	Teamwork Skills	11
	Work and/or Volunteering Experience	12
	Research	13
	Leadership Linked to Medicine	14
	Developing Independence In Preparation for Higher Education	15

# Essential Requirements

The MM Awards Mark Scheme aims to provide students with further information on how best to complete each criterion of the programme.

**BEFORE** looking into each criterion students **MUST** familiarise themselves with the Supporting Evidence Quality Descriptors, as this will maximise your success on the programme.

Activities undertaken up to 2 years before the level of the award you are applying can be accepted. For example a year 10/s3 starting at Bronze can use activities from year 8/s1 onwards. This does not apply to the extracurricular activities criterion (see mark scheme for further).

Once submissions have been graded and returned, students will not be allowed to resubmit work.

# Minimum Acceptance Criteria

Criterion	Reference	Certificate
<p><b>Minimum Acceptance Criteria (MAC)</b></p> <ul style="list-style-type: none"> <li><b>Bronze, Silver &amp; Gold:</b> Same for all levels of the award</li> </ul>	<p>All references must include:</p> <ul style="list-style-type: none"> <li>Participants name</li> <li>Referees details (name, organisation and contact)</li> <li>Activity information</li> <li>Referees signature (can be virtual)</li> </ul> <p>References that do not adhere to the above criteria will not be accepted as evidence.</p> <p>Requirements need to be fulfilled for evidence to be accepted. The quality of the reference will be marked in accordance with the relevant criterion mark scheme.</p>	<p>All certificates must include;</p> <ul style="list-style-type: none"> <li>Participants name</li> <li>Organisations name</li> <li>Activity</li> <li>Involvement/role of participant</li> <li>Date of attendance</li> </ul> <p>It is the student's responsibility to ensure all the above criteria are clear on the certificate, otherwise It will be rejected.</p> <p>For e-learning courses, screenshots/emails showing completion of the e-learning modules is sufficient.</p>

Photos and videos will also be accepted as evidence, however, you must complete the parental consent form prior to submitting any evidence for your awards. We take safeguarding very seriously, and your parents must provide permission for you to submit any photos or videos to Medic Mentor. These will not be shared anywhere, and will be destroyed within 1 year of completing your awards programme. The only people who will have access to any of your submissions will be the chief mentors and the Admissions and Support Team at Medic Mentor.

# Application Knowledge



Criterion	Suggested Material
<p><b>Bronze:</b> 1 day</p> <p><b>Silver:</b> Bronze + 1 day</p> <p><b>Gold:</b> Silver + 2 days</p> <p><b>*Attendance must be for a full day.</b></p>	<ul style="list-style-type: none"><li>• Attendance at MM Get into Veterinary Medicine Conference</li><li>• Attend MM School Ambassador or Medical Leadership Programme Meeting</li></ul> <p>This list is not exhaustive and other conferences will be considered. It will need to be relevant to your application knowledge.</p> <p><b>Accepted supporting evidence:</b> Certificate of attendance/completion</p>

# E-Learning



Criterion	Suggested Material
<p><b>Bronze:</b> 1 e- learning course</p> <p><b>Silver:</b> Bronze + 1 e- learning course</p> <p><b>Gold:</b> Silver + 1 e- learning course</p> <p><b>*each e-learning course must be at least 4 hours</b></p>	<p>An online learning course that is relevant to a career in that profession. Accepted courses include:</p> <ul style="list-style-type: none"><li>• WHO</li><li>• Harvard</li><li>• E-learning for health (some modules can be accessed without a login)</li><li>• Class Central</li><li>• Future Learn</li><li>• NIHR</li></ul> <p>This list is not exhaustive and other resources will be accepted at the discretion of your supervisor.</p> <p><b>Accepted supporting evidence:</b> Certificate/screenshot of completion</p>

# School Societies/ Virtual Medical Society



Criterion	Suggested Material
<p><b>Bronze:</b> Join school society, local society or Medic Mentors VMS and reflect on your experience*</p> <p><b>Silver:</b> Bronze + participate – 1 activity</p> <p><b>Gold:</b> Bronze + actively involved – being a committee member</p> <p><b>*a society is 3+ people meeting on a regular basis</b></p>	<p>Involvement in medical/dental/vet/science/healthcare society in school, locally or with MM.</p> <p>Activities include:</p> <ul style="list-style-type: none"><li>• Delivering a presentation</li><li>• Leading a session</li><li>• Involvement in a debate</li></ul> <p><b>Accepted supporting evidence:</b> An email confirmation, certificate or reference stating that you have been accepted into the society or that you have participated in society activities.</p>

# Commitment To Extra-Curricular Activities



Criterion	Suggested Material
<p><b>Bronze:</b> 3 months</p> <p><b>Silver:</b> Bronze + 3 months</p> <p><b>Gold:</b> Silver + 6 months</p> <p><b>*Activities from year 10/S3 will be accepted. Continuous commitment, not to have been stopped more than 12 months ago.</b></p>	<p>An extracurricular activity is any activity that is done in addition to your regular schoolwork. Therefore, any activity done in addition to your schoolwork will be counted.</p> <p>If you have different activities that you have participated in which total 12 months, this will be accepted. For example, you may have been playing the piano for 6 months and then switched to football for 6 months. These activities together can make up the full 12 months.</p> <p><b>Accepted supporting evidence:</b> Evidence should be in the form of a certificate, reference or the activity itself. For example, if you are an artist, you can submit photos of your work. If you like to make cakes or hats, photos of your creations will be sufficient. If you have created a website, you can submit the link. You can also submit videos as evidence; for example, if you used the time to teach yourself how to play the jazz piano!</p>



# Develop Skills Relevant to Veterinary Medicine



Criterion	Suggested Material
<p><b>Bronze:</b> Develop your communication skills</p> <p><b>Silver:</b> Bronze + develop your manual dexterity skills</p> <p><b>Gold:</b> Silver + develop your life saving skills</p>	<p>Examples include:</p> <ul style="list-style-type: none"><li>• <b>Communication skills</b> - such as adaptive communication, overcoming communication barriers e.g. learning a new language, Makaton, British Sign Language.</li><li>• <b>Manual dexterity skills</b> - such as knitting, painting, model making etc.</li><li>• <b>Lifesaving skills</b> (face to face only) - lifeguard qualification, first aid, Basic Life Support course, pet first aid etc.</li></ul> <p>This list is not exhaustive and other activities will be considered.</p> <p><b>Accepted supporting evidence:</b></p> <p>Evidence should be in the form of a certificate, reference or the activity itself. For example, if you are an artist, you can submit photos of your work. If you like to make cakes or hats, photos of your creations will be sufficient.</p>

# Presentation Skills



Criterion	Suggested Material
<p><b>Bronze:</b> 1 presentation</p> <p><b>Silver:</b> Bronze + 1 presentation</p> <p><b>Gold:</b> Silver + 1 presentation related to Medicine</p>	<p>A presentation is a means of communicating that can be adapted to various speaking situations, such as talking to a group, addressing a meeting or briefing a team. Examples include:</p> <ul style="list-style-type: none"><li>• Doing an individual or group presentation e.g. through school</li><li>• Briefing a meeting such as a medic society meeting</li></ul> <p>At Medic Mentor you have many opportunities to present. For example, you can give presentations at the Get into Veterinary Medicine Conference, the Virtual Medical Society, the Medical Leadership Programme Events and at the Summer School.</p> <p><b>Accepted supporting evidence (either):</b> Certificate of involvement, a reference or supplements such as videos of presentations</p>

# Teamwork Skills



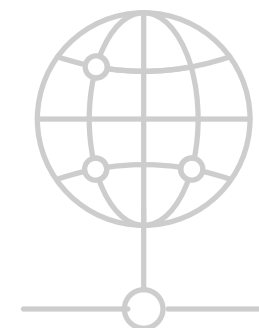
Criterion	Suggested Material
<p><b>Bronze:</b> Involvement in 1 event/fundraiser/project</p> <p><b>Silver:</b> Involvement in 2 event/fundraiser/project (1 from Bronze and 1 from Silver)</p> <p><b>Gold:</b> Silver + organising 1 event/fundraiser/project</p>	<p>Students must show evidence of teamwork through organisation of an event, fundraiser or educational project. Activities could include:</p> <ul style="list-style-type: none"><li>• Fundraising</li><li>• Medic Mentor Opportunities</li><li>• School Projects</li></ul> <p>This list is not exhaustive and other activities will be considered.</p> <p><b>Accepted supporting evidence:</b> Certificate of involvement, a reference or supplements such as photos or videos can be submitted to evidence your activities.</p>

# Work and/or Volunteering Experience



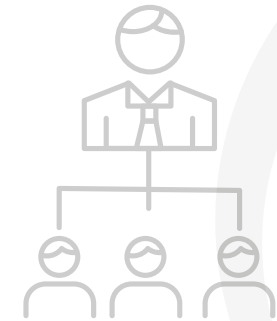
Criterion	Suggested Material
<p><b>Bronze:</b> N/A</p> <p><b>Silver:</b> 1-week of vet animal husbandry experience and 1 week clinical experience (shadowing a vet)</p> <p><b>Gold:</b> 2 weeks of vet animal husbandry experience and 2 weeks of clinical experience (shadowing a vet)</p> <p>Due to the ongoing coronavirus pandemic, we note that students will be encountering difficulties in securing volunteering and work experience placements. In this case the requirements will be adapted as follows:</p> <ul style="list-style-type: none"><li>• Please note that many vet schools have changed their requirements due to COVID-19 and many are now accepting virtual work experience and online courses in place of traditional experience. Please check individual uni web pages for more details.</li></ul>	<p>Relevant work experience in a healthcare setting</p> <ul style="list-style-type: none"><li>• 1-week work experience = 1 full week (Mon-Fri/40 hours)</li><li>• 1-week volunteering = 15 hours</li><li>• Work Experience or volunteering cannot take place abroad</li></ul> <p>The following available work experience programmes will contribute the following number of days to your work experience total:</p> <ul style="list-style-type: none"><li>• Vet Mentor Live Free Virtual work experience programme takes place over 6 months and will equate to 4 days of your work experience total</li><li>• Free Virtual Work Experience Course by the Uni of Nottingham equates to 6 hours of work experience.</li></ul> <p><b>Accepted supporting evidence:</b> Certificate of completion or a reference</p>

# Research



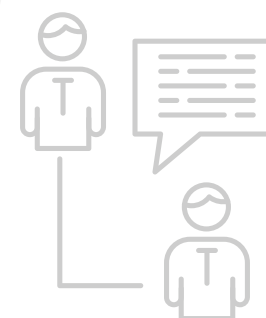
Criterion	Suggested Material
<p><b>Bronze:</b> N/A</p> <p><b>Silver:</b> Complete a course on research principles</p> <p><b>Gold:</b> Silver + complete a research project</p>	<p>A research project is an endeavour to answer a research question. Students' projects must endeavour to do the same. This project is not required to be veterinary in nature, although for applications this would be preferable.</p> <p><b>Examples include</b></p> <ul style="list-style-type: none"><li>• EPQ</li><li>• CREST</li><li>• Writing an article for Mentor magazine</li><li>• Medic Mentor Essay Competition</li><li>• There are many free online courses on research principles e.g. Future Learn, NIHR or the Medic Mentor Medical Leadership Programme</li></ul> <p><b>Accepted supporting evidence:</b> <b>Silver</b> - Certificate/screenshot <b>Gold</b> - Students MUST provide a copy of their research project</p>

# Leadership Linked To Medicine



Criterion	Suggested Material
<p><b>Bronze:</b> N/A</p> <p><b>Silver:</b> N/A</p> <p><b>Gold:</b> Evidence of leadership with a link to medicine</p>	<p>Any activity that shows evidence of leadership. It cannot simply be volunteering, there has to be evidence of a leadership role. This can include:</p> <ul style="list-style-type: none"><li>• Medic Mentor Medical Leadership Programme</li><li>• Being a committee member of the Virtual Medical Society or Medic Mentor Book Club.</li><li>• St Johns Ambulance</li><li>• Leading a School Medic's Society</li></ul> <p>This is not an exhaustive list and other activities will be considered.</p> <p><b>Accepted supporting evidence:</b> Certificate, reference, photo or video evidencing the activity.</p>

# Developing Independence In Preparation for Higher Education



Criterion	Suggested Material
<p><b>Bronze:</b> N/A</p> <p><b>Silver:</b> N/A</p> <p><b>Gold:</b> 4 full day residential or 6 months part time job</p>	<p>Students must have resided at the location for the entire duration of the four (or more) days. The residential programme can be undertaken in the UK or abroad.</p> <ul style="list-style-type: none"><li>• The residential does not need to be healthcare related.</li><li>• The programme has to be organised by an external organisation (holidays are not included).</li><li>• Evidence of at least a 6-month commitment to a part time job.</li><li>• Other courses both physical and virtual are potentially eligible to fulfil this criterion at the discretion of MM Awards Team based upon a quality assessment of the learning outcomes.</li></ul> <p><b>Accepted supporting evidence:</b> Certificate or reference only.</p>



---

**MEDICMENTOR.CO.UK**